

**ARTWORK INFO**

Client: **Chrysal International B.V.**  
 Order number: **479225**  
 Job description: **Chrysal BVB complete 1L UK IE**  
 File name: **CHYE014110D**  
 Rev. Date: **12-11-2021**  
 Rev. Time: **11:50**  
 Barcode: **8719400017304**  
 BWR: **0 µ**  
 Width: **280 mm**  
 Length: **150 mm**  
 Print type: **Digitaal**  
 Tech. drawing:  
 Textversion: **1** Imageversion: **1**  
 Scale: **100%**  
 Surface  Reverse

Account management:  
**Annemarie Groenewoud**

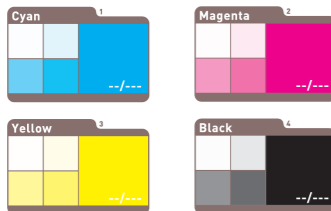
Operator:  
**Bart van de Coterlet**

Important:  
 This is final artwork. We advise that this artwork is checked carefully for layout, spelling and text. Please check thoroughly. It is the responsibility of the client to check these points and accept full liability. Do not sign approval if there are amendments to be made. Another proof will be supplied.

Colours used in a PDF, on a laserprint or HPproof do not represent the final result. A GMG-Epsonproof is a valid reference for CMYK colours. When Pantone® colours are used, the colours must be matched with the official Pantone® guide.

Sign for approval  
 Name:

Date:



280 mm

After removal of bulb or tuber, place cut flowers in solution containing Chrysal BVB. Dosage and treatment time is dependent on flower species. Ensure that an appropriate volume of treatment solution is used to allow each stem to receive sufficient Chrysal BVB.

**SAFETY PRECAUTIONS**  
**Concentrated product**  
 Dispose of contents/container to a licensed hazardous waste disposal contractor or collection site except for triple rinsed empty containers which can be disposed of as non-hazardous waste

**Diluted solution (= ready-to-use solution)**  
 Used solution must be disposed of into drains which do not empty directly into surface water, do not empty used solution on to soil or any other route.

**Chrysal BVB**  
**Post-harvest product for cut flowers of bulb and tuber crops**  
 A soluble concentrate (SL) product containing 19 g/L 6-benzyladenine and 19 g/L gibberellins (GA4, GA7) for use as a plant growth regulator on cut flowers of bulb and tuber crops after harvest.

**Risk and Safety information**  
**To avoid risks to human health and the environment, comply with the instructions for use.**  
 Dispose of contents/container to a licensed hazardous waste disposal contractor or collection site except for triple rinsed empty containers which can be disposed of as non-hazardous waste.

MAPP: 17780  
 PCS No: 06195

In the event of an emergency: (IE) call the National Poisons Information Centre, Beaumont Hospital at 01 809 2166 or 01 8379964. (UK) contact your general practitioner or call 111.

Marketing company: Chrysal UK  
 Ardsley Mills  
 Bradford Road  
 East Ardsley  
 Leeds WF3 2DW  
 Tel: +44 (0) 113 3074050  
 Email: info@chrysal.co.uk

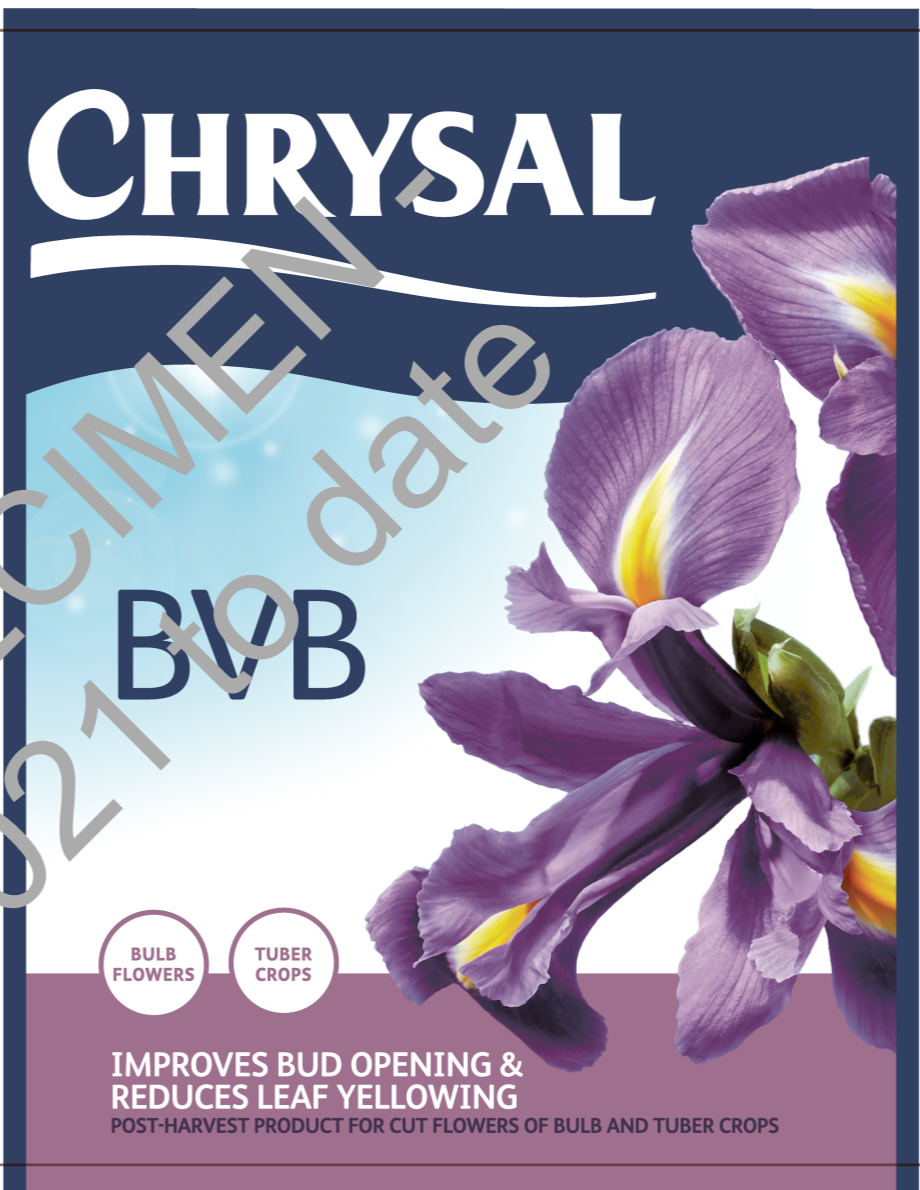
Authorisation holder: Chrysal International BV  
 Gooimeer 7  
 1411 DD Naarden  
 The Netherlands  
 Tel: +31 (0) 35 695888  
 Email: info@chrysal.nl

CHARGENR. / THT.

NET 1 L

8 719400 017304 >

E014110D



**BULB FLOWERS**  
**TUBER CROPS**

**IMPROVES BUD OPENING & REDUCES LEAF YELLOWING**  
 POST-HARVEST PRODUCT FOR CUT FLOWERS OF BULB AND TUBER CROPS

**IMPORTANT INFORMATION**  
 FOR USE ONLY AS A PROFESSIONAL HORTICULTURAL PLANT GROWTH REGULATOR  
 Ornamental plant production (Tulip, Iris, Lily, Alstroemeria, Nerine and Anemone)

Minimum treatment duration (hours)	Maximum treatment duration (days)	Dose Chrysal BVB in ml/litre water (Tulip)	Dose Chrysal BVB in ml/litre water (Nerine, Anemone)	Dose Chrysal BVB in ml/litre water (Lily and Alstroemeria)
10	7	-	-	0.15
10	7	-	2	-
10	10	2	-	-

When used as a cut stem treatment the maximum treatment period (preferably at 0-5°C with a maximum of 4 days at room temperature) must not exceed 10 days for tulips and 7 days for all other crops. The treatment period may include a transport and store phase. During the store phase cut stems can stay in the diluted Chrysal BVB solution. Any residual solution can be discharged into a sewage system connected to a treatment plant.

**READ THE LABEL BEFORE USE. USING THE PRODUCT IN A MANNER THAT IS INCONSISTENT WITH THE LABEL MAY BE AN OFFENCE. FOLLOW THE CODE OF PRACTICE FOR USING PLANT PROTECTION PRODUCTS.**

**SAFETY PRECAUTIONS**  
**Operator Protection**  
 Engineering control of operator exposure must be used where reasonably practicable in addition to the following personal protective equipment: Operators must wear suitable protective gloves when handling concentrate. However, engineering controls may replace personal protective equipment if a COSHH assessment shows that they provide an equal or higher standard of protection.

**Environmental protection**  
 Do not contaminate water with the product or its container (Do not clean application equipment near surface water / Avoid contamination via drains from farmyards and roads).

**Storage and disposal**  
 KEEP IN ORIGINAL CONTAINER, tightly closed, in a safe place.  
 WEAR protective gloves / protective clothing / eye protection / face protection.

**Equipment Cleaning**  
 Immediately after use, wash equipment thoroughly with water at least three times. Add washings to used solutions of Chrysal BVB for appropriate disposal.

**DIRECTIONS FOR USE**  
**IMPORTANT:** This information is approved as part of the Product Label. All instructions within this section must be read carefully in order to obtain safe and successful use of this product.

Chrysal BVB can be used to improve vase life and bud opening and reduce leaf yellowing in cut flowers of bulb and tuber crops. Effects are dependent on flower species and cultivar. When using on a new ornamental crop or a new variety, Chrysal BVB should be tested on a limited number of plants to determine crop tolerance. Lily flower colour may be paler after use of Chrysal BVB.

150 mm